



CBF 2019 2020



Oil Pattern Distance: **38 Feet**      Reverse Brush Drop: **38 Feet**      Oil Per Board: **40 uL**  
 Forward Oil Total: **13.6 mL**      Reverse Oil Total: **11.56 mL**      Volume Oil Total: **25.16 mL**  
 Forward Boards Crossed: **340 Boards**      Reverse Boards Crossed: **289 Boards**      Total Boards Crossed: **629 Boards**

Start	Stop	Loads	Speed	Crossed	Start	End	Feet	T.Oil
1	2L 2R	4	14	148	0.0	5.9	5.9	5920
2	5L 5R	1	14	31	5.9	7.8	1.9	1240
3	7L 7R	3	18	81	7.8	15.4	7.6	3240
4	9L 9R	1	18	23	15.4	17.9	2.5	920
5	11L 11R	3	18	57	17.9	25.5	7.6	2280
6	2L 2R	0	22	0	25.5	38.0	12.5	0

Forward Reverse More

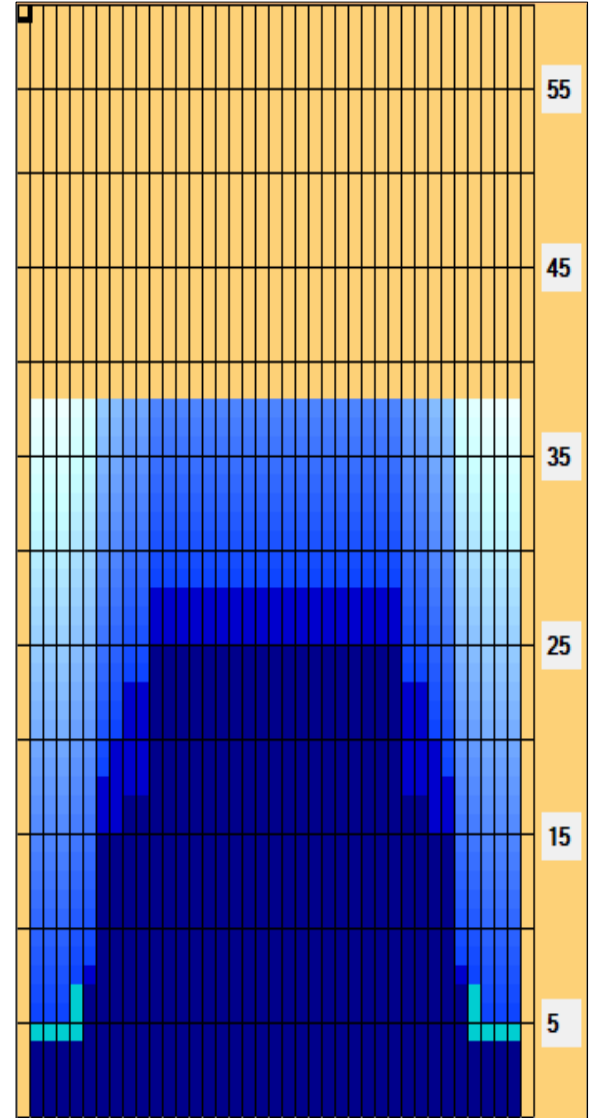
Start	Stop	Loads	Speed	Crossed	Start	End	Feet	T.Oil
1	2L 2R	0	30	0	38.0	28.0	-10.0	0
2	11L 11R	2	18	38	28.0	22.9	-5.1	1520
3	9L 9R	1	18	23	22.9	20.4	-2.5	920
4	8L 8R	1	18	25	20.4	17.9	-2.5	1000
5	7L 7R	4	18	108	17.9	7.7	-10.2	4320
6	6L 6R	2	14	58	7.7	3.8	-3.9	2320
7	2L 2R	1	14	37	3.8	1.9	-1.9	1480
8	2L 2R	0	18	0	1.9	0.0	-1.9	0

Forward Reverse More

Conditioner:  
Type In or Select One

TransferType:  
Type In or Select One

- Forward
- Reverse
- Combined
- Buff



Item	3L-7L:18L-18R	8L-12L:18L-18R	13L-17L:18L-18R	18L-18R:17R-13R	18L-18R:12R-8R	18L-18R:7R-3R
Description	Outside Track:Middle	Middle Track:Middle	Inside Track:Middle	Middle: Inside Track	Middle:Middle Track	Middle:Outside Track
Track Zone Ratio	2.95	1.17	1	1	1.17	2.95

